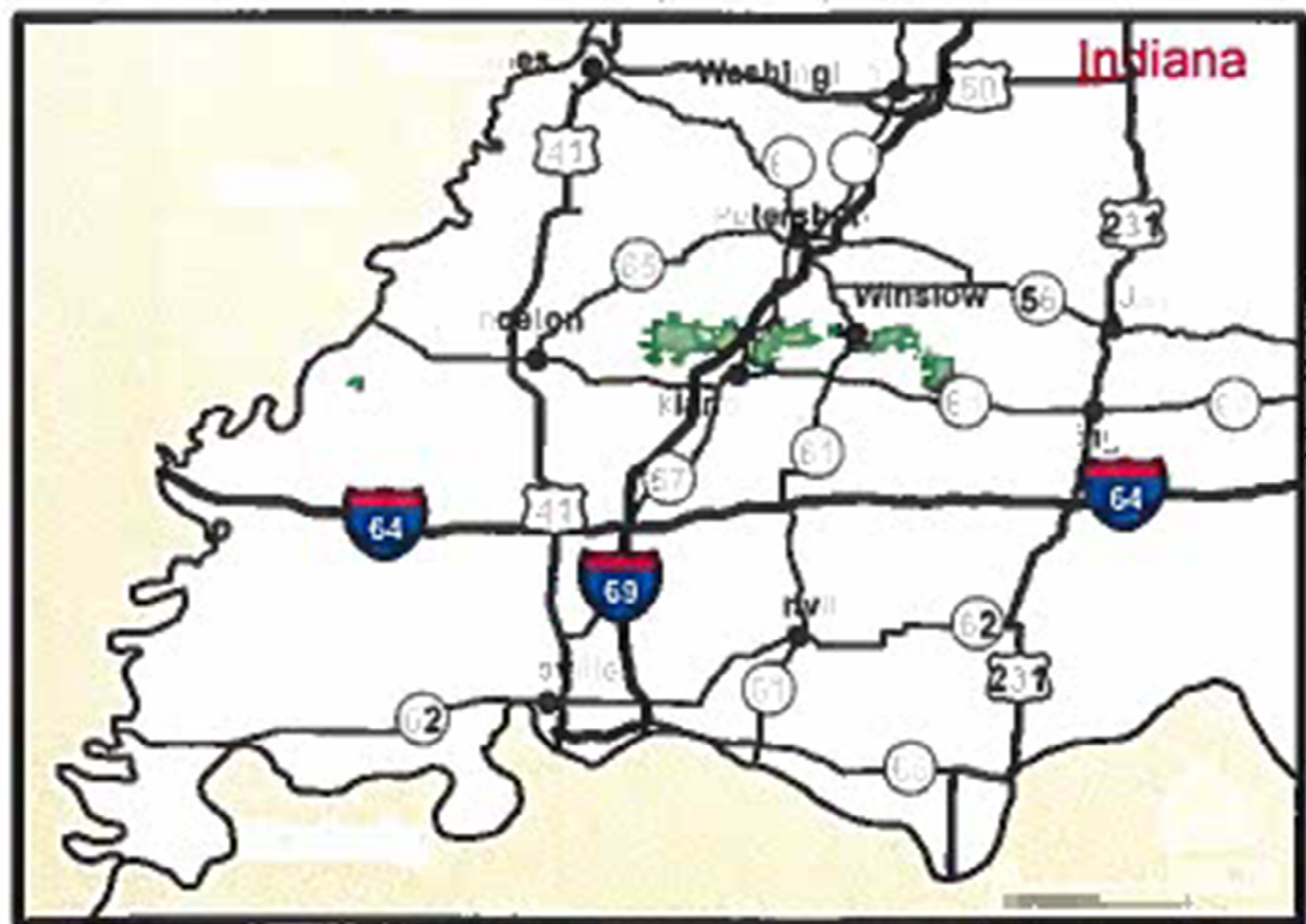


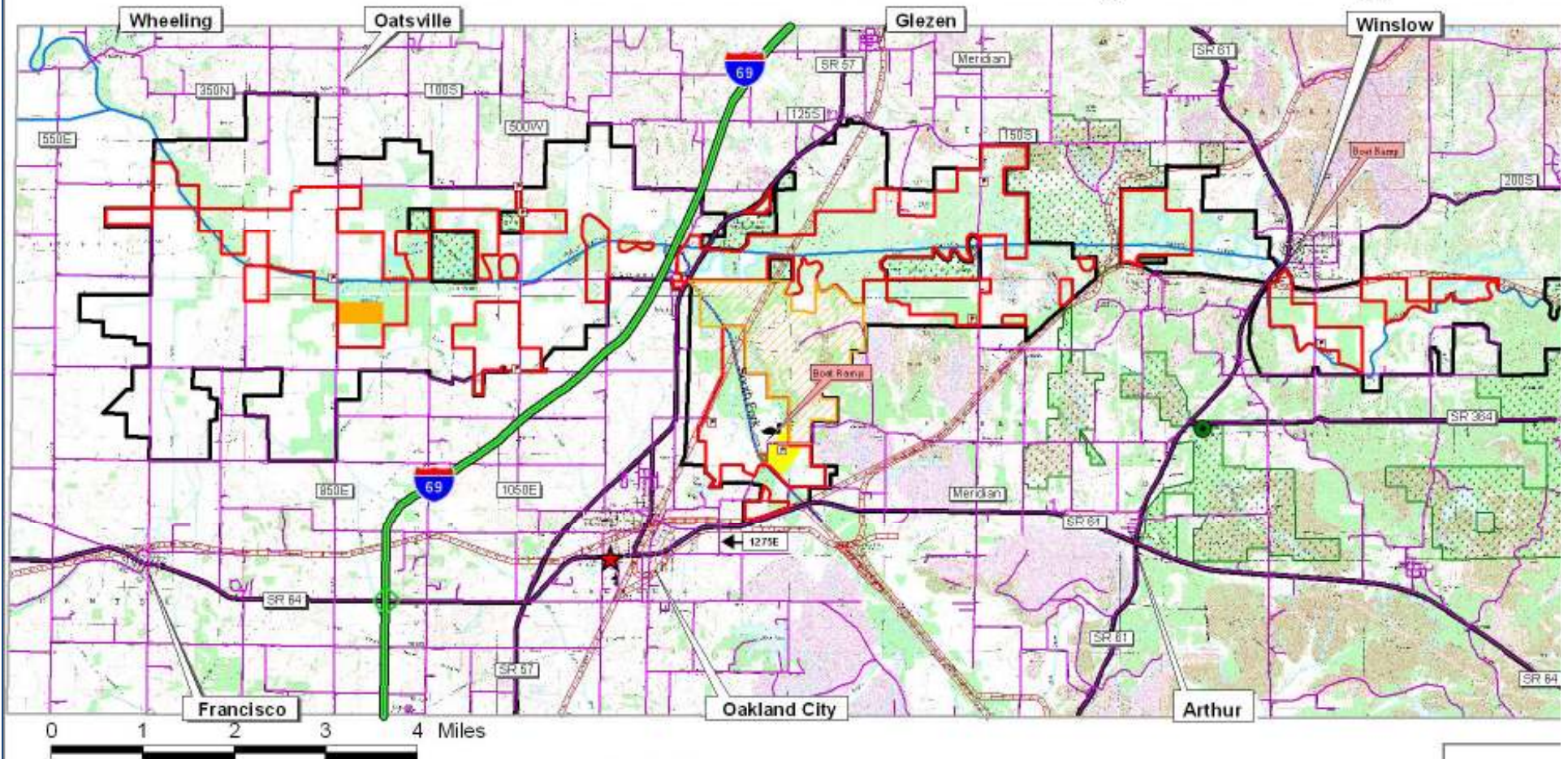
# PATOKA RIVER NATIONAL WILDLIFE REFUGE AND MANAGEMENT AREA







# Patoka River National Wildlife Refuge and Management A



Errors may exist on this map. The U.S. Fish and Wildlife Service assumes no liability for the use or misuse of this map product.

Website: [www.fws.gov/refuge/patoka\\_river/](http://www.fws.gov/refuge/patoka_river/)  
20 February 2014 S:\GIS\Patoka\2012map.apr



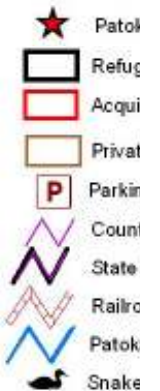
Sycamore Land Trust  
Refuge Conservation Easement  
No Hunting & Fishing Until Opened

Patoka River Refuge Office



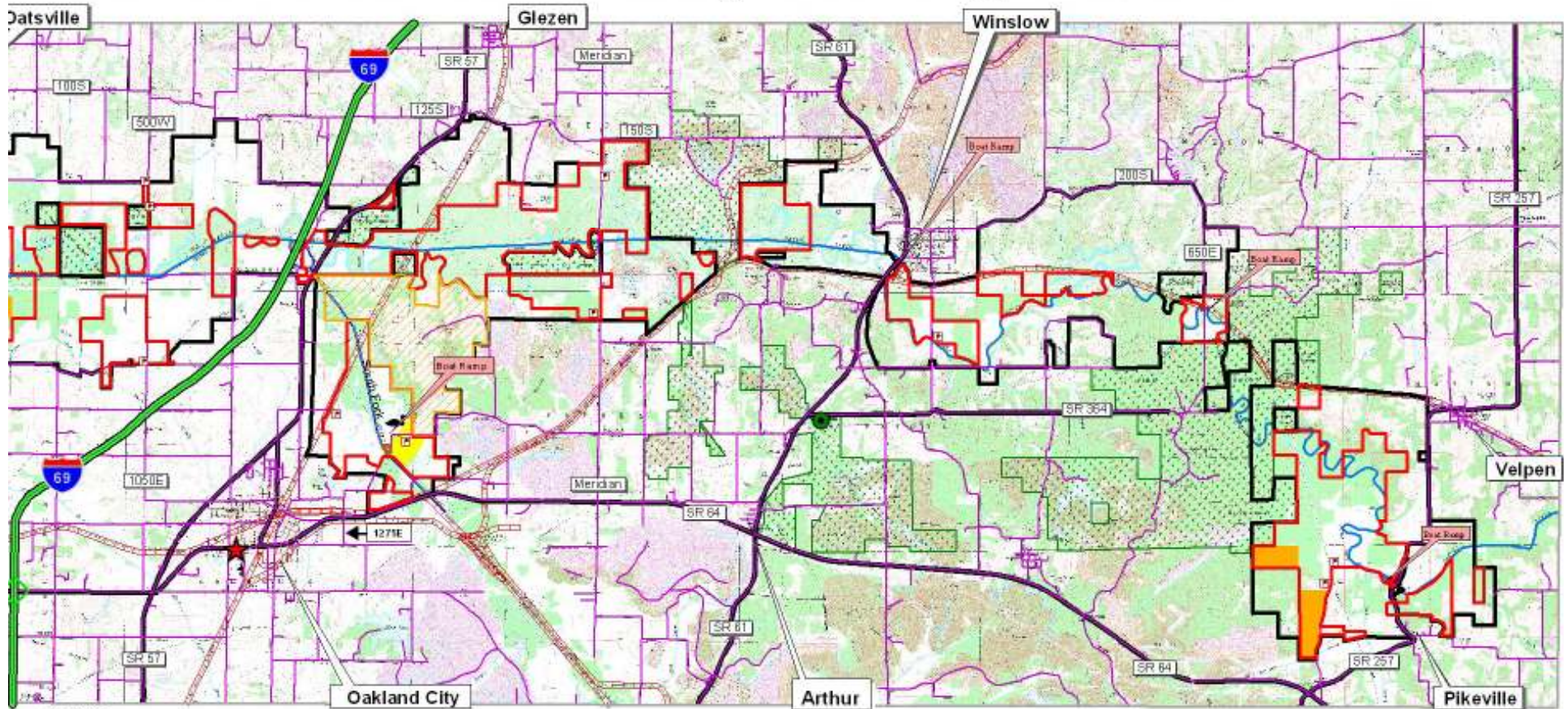
Acquired to date: 7,398 acres.  
Acquisition area: 22,472 acres.  
Conservation easement: 1,043 acres.  
Refuge established: 9/7/1994.

## Topo Features





# Patoka River National Wildlife Refuge and Management Area



4 Miles



iver/  
ap.apr  
R office

## Patoka River Refuge Office



Acquired to date: 7,398 acres.  
Acquisition area: 22,472 acres.  
Conservation easement: 1,043 acres.  
Refuge established: 9/7/1994.

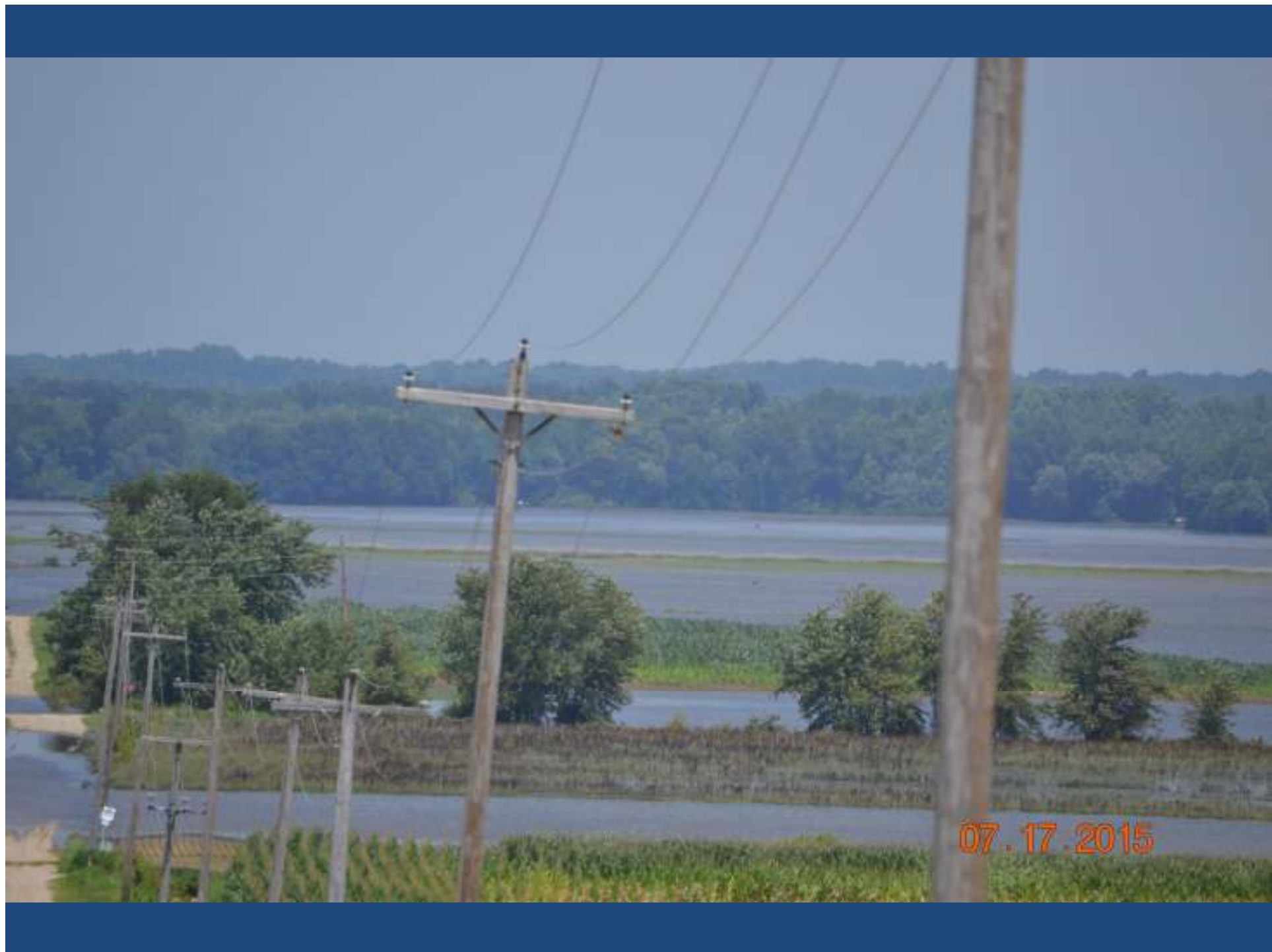
## Topo Features



## Map Legend











03.11.2015





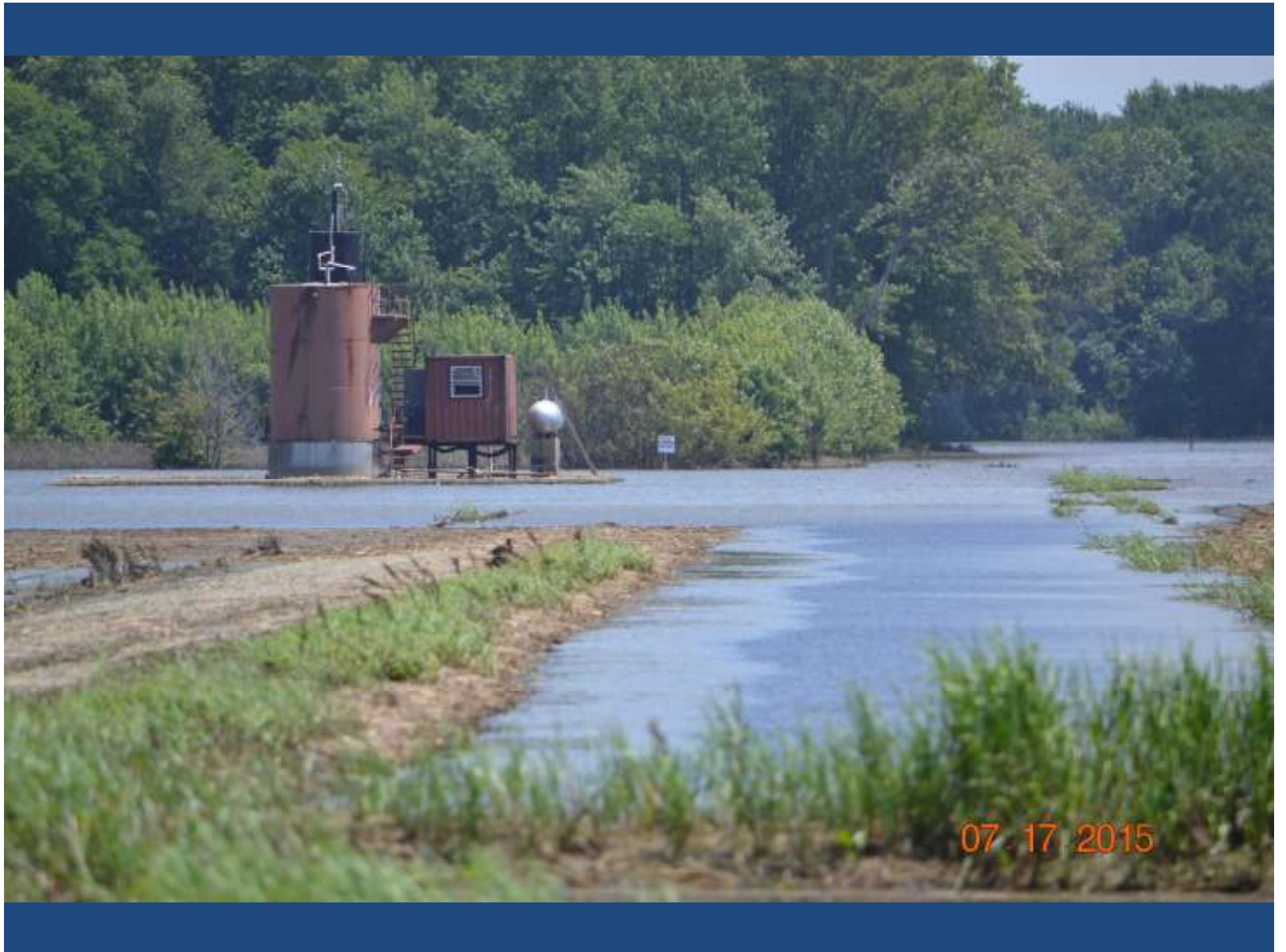




03.11.2015





































02.11.2015







10.22.2014

